

# RAMROD

## A2450 HYDROSTATIC 4WD ARTICULATING LOADER



### RAMROD MODEL A2450

- Countless material handling applications for grain and cattle farm operations
- Ideal for property maintenance on large acreages and/or worksites
- Designed and manufactured for indoor and outdoor "all season use"
- Transport bales, hay, snow, dirt, silage, manure, fertilizer with telescoping lift arm system
- Articulating loader design allows for tight turning radius in hard to reach locations
- Multiple quick attach attachments available
- Comprehensive warranties and technical support

### SPECIFICATIONS

MAX Lift - Boom Straight & Retracted	2450 lbs [ 1114 kg]
MAX Lift - Boom Straight & Extended	1800 lbs [ 816 kg]
MAX Lift - Full Turn & Boom Retracted	1500 lbs [ 680 kg]
MAX Lift - Full Turn & Boom Extended	1200 lbs [ 544 kg]
MAX Lift Height to Hinge Pin	R 97" - E 118"
MAX Lift Height to Level Bucket	R 92" - E 112"
MAX Reach [Retracted - Extended]	R 98" - E 167"
Dump Reach at Full Height	R 10" - E 30"
Bucket Angle [Dump - Rollback]	30 Degrees - 40 Degrees
Length	102"
Width	49"
Height	84"
Weight	3500lbs [ 1588 kg]
Under Frame Clearance	10"
MIN Turning Radius	80"

CONTINUE ON OTHER SIDE →

# RAMROD A2450 SERIES

## FEATURES INCLUDE:

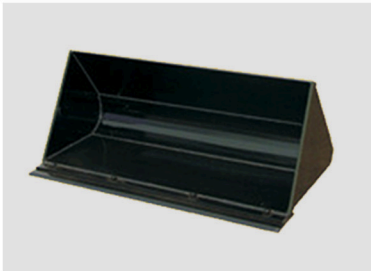
- Standard Perkins 404D-15 33HP Liquid Cooled Diesel Engine
- Special Order Kubota V1505 33 HP Liquid Cooled Diesel Engine
- 2 Drive Speed Ranges
- Closed Cab with ROPS, FOPS, Front Windshield with Electric Wiper, Opening Door and Heater for Operator Comfort
- Rotary Beacon Warning Light on Top of Cab
- Total Front, Working & Safety Warning Lights
- Telescopic Self-levelling Loader Arms
- Floating Loader Arm (Boom) Feature
- Front Auxiliary Hydraulic Outlets
- Rear Auxiliary Hydraulic Outlets
- Cushioned Adjustable Seat with Arm Rests & Seat Belt
- North American Compatible Quick Attach (2 Levers) Accessory Bracket
- EC & NA Standards Compliant and CE Certified
- Joystick Control for Tilt, Attachment Control, Loader Lifting & Lowering and Telescopic Boom Extension & Retraction
- Hydraulic Oil Cooler
- Counterweight
- Heavy Duty Lugged Design Tires
- Anti-Theft Security Key
- Rear Bumper
- Catalytic Converter
- Warranty One Year
- Trailer Hitch
- Back-Up Warning Beeper
- Differential Lock
- Superior Visibility from Front Section
- 12 Volt Electric System
- Forward & Reverse Floor Pedals
- Quick Access Panels for Easy Serviceability

### Instrument Panel:

- Indicating Fuel Level
- Low Fuel Warning
- Preheating Glow Plug Indicator
- Low Voltage
- Coolant Temperature
- Low Engine Oil
- Dirty Oil Indicator
- Hour Meter
- Switches for Lower Front Lights
- Front Head Lights
- Top Rotating Light
- Double Power Output
- Warm Air Heater
- High/Low Oil Pressure
- Differential Lock
- 4 in 1 Bucket Control



## ATTACHMENTS



**Material Buckets**



**4 in 1 Bucket**



**Bale Spear**



**Auger**



**Pallet Forks**



**Snow Blower**



**Rotary Broom**



**Dozer Blade**