

FEBRUARY 2012

## PROTECT YOUR MOST VALUABLE ASSET

LEON farm equipment dealers look forward to another year of strong earthmoving related equipment sales. With the rising cost of valuable farmland and increased demand for bigger front wheel assist and 4WD tractor sales forecasted by mainline tractor companies, farmers are more serious than ever about landscaping and molding their land with the right tractor/land scraper combination.

LEON leads the way in 2012 with more agricultural dolly wheel and straight hitch models than ever before. Complimenting them is an expanded list of options and accessories to help operators get the most out of their investment. GPS / laser equipment, push bumper bars, side extensions, bigger floatation tires, and special hitch configurations are just a few of the accessories available. LEON sales and engineering personnel are constantly in contact with equipment operators and dealers gaining more insight into what performance features and innovations will help them increase productivity in the field. When making a sizable equipment investment, we understand that nothing short of optimal performance will do.

Most informed users have important land scraper performance criteria they look for when measuring what LEON unit will best suit their needs. These include:

1. Determining which unit can best penetrate your land's soil conditions
2. Linking tractor horsepower to your ideal capacity needs
3. Estimating overall tractor/scraper operating and servicing costs.
4. Calculating the distance and time required to transport and eject materials.

Considering all the criteria involved, the LEON line has evolved and changed to of-



*LEON M2050 I-Series Straight Hitch Scraper working at Leggett Farm in Edgerton, AB*

fer capacities which maximize both precision and productivity, while keeping overall servicing, tractor fuel consumption, and potential downtime to a minimum.

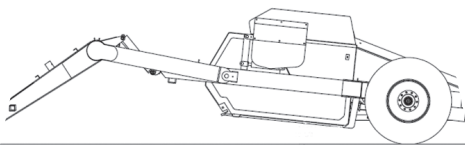
Higher horsepower track and wheeled agricultural tractors are more powerful and efficient than ever when pulling LEON land scrapers. Increased traction and floatation has never been better when working in wet farmland and dirt. Certain farmland and soils (wet clay, hard-pack, etc) can present enormous chal-

lenges to the operator. The LEON 'Straight Hitch' Series is here to offer four models for tractors in the 150 to 500 hp range. When used in the right applications, the LEON Straight Hitch Line can assist in transferring **up to 30% of its scraper weight** to the tractor drawbar in order to fully maximize down pressure onto the cutting edge.

Some units can also be equipped with Large Floatation 23 ½ x 25 Super Grip Tires to aggressively guide the unit through the most challenging terrain. The extra width and superior tire height of LEON tire options are a noticeable advantage over other multi tire scrapers due to their **superior climbing performance** on both wet and soft farmland.



*Large Floatation Super Grip Tires*



*LEON Straight Hitch design allows for maximum clearance, full operator depth control, and an unobstructed view of the scraper cutting edge from the tractor cab.*

*Continued on Page 2...*

...In addition to large floatation tires, the combination of 116" (294 cm) bucket width, high ground clearance, and variable depth control makes loading fast and easy on LEON M1700 and M2050 Models.



John Deere 9630W pulls LEON M2050 Land Scraper on land reclamation project

Powerful Push Off RAM Cylinder technology moves wet soil, clay, and hard-pack effortlessly allowing the operator to maximize cycle times and precisely spread dirt where needed. Contact your factory representative for complete details on the right LEON Land Scraper Package to meet your needs.

LEON Tandem Series Scrapers are available for large earth-moving projects. Capacities range from 20.24 cu.yds. up to 40.74 cu.yds.



## LEON Land Scraper Performance Commitment

### LEON LONG LIFE PROTECTION

All LEON Land Scraper technology features reversible and replaceable cutting edges, high wear scraper tires, and heavy duty hubs and spindles. Long life industrial built RAM cylinders and hydraulics have fueled the LEON LAND SCRAPER line for over 40 years and counting. Our trouble free warranties and dealer support keep you working in the field season after season.

### LEON PRODUCTIVITY

Scientifically designed, the powerful cutting edge action and responsive hydraulic system makes the large capacity carrying buckets easy to load. Make fewer passes, and reduce overall tractor horsepower and fuel requirements with dependability and performance you can trust.

### LEON LASER PRECISION

Utilize LEON Laser Guided Systems with fully synchronized scraper 'hydraulic control' for faster, more precise grading and spreading.



### LEON VERSATILITY

Serving your complete needs, only LEON provides Dolly Wheel and Straight Hitch Models in capacities ranging from 6.5 to 20 yards, plus multiple tandem unit options!



## Duchek Farms Demand Performance

When reliability and strength are called for, you want a LEON Scraper. Last autumn, Duchek Farms Ltd. purchased the LEON Model 1700 Landscraper and have nothing but praise for the machine. "LEON's Scraper is sure good, in the mud the big tires sure help alot." Brent, a hired man on the farm, comments that "You can get into a lot more places the neighbours can't with their scrapers." Using it to level treelines and build up low spots Tim Duchek couldn't be happier with the machine. "So far it's been really good." In addition to Straight Hitch Models, LEON offers easy to transport Dolly Wheel Units in a capacity that's right for you.



Tim Duchek and farm hand Brent with

New LEON Model 1700 Land Scraper

## 2012 LEON Land Scraper Series

LEON Models	Dolly Wheel	Straight Hitch	Heaped Capacity	Tandem Series	GPS-Laser Ready
M 650	✓		6.51 cu.yd. (4.98 cu.m)		✓
M 1000	✓	✓	10.12 cu.yd. (7.74 cu.m)	✓	✓
M 1350	✓	✓	13.38 cu.yd. (10.21 cu.m)	✓	✓
M 1700	✓	✓	16.93 cu.yd. (12.94 cu.m)	✓	✓
M 2050	✓	✓	20.37 cu.yd. (15.55 cu.m)	✓	✓



## NEW LEON Dozers Compliment NEW John Deere Series

With the rapid release of new tractors from John Deere, LEON Engineering has been aggressively serving John Deere dealers with new LEON Dozer Models to choose from. LEON Dozer Blade packages are available to fit the new John Deere Wheeled and Track '9R Series', '8R Series', '7R Series', and 6000 Series. Visit our website for complete news release information and complete listing of accessories available. LEON ensures that all Dozer Blade Models feature easy tractor serviceability, high underframe clearance, superior lift height, and its patented 'Quick On-Quick Off' mounting system.

**LEON M5000 on John Deere 9R-Series**



**LEON M3530 on John Deere 8R-Series**



**LEON M2530 on John Deere 7R-Series**



**LEON M775Q on John Deere 6000 Series**



## LEON Compact Mid-Mount Loaders Now Available



LEON strength and versatility deliver what you need to tackle any job. With a streamlined, mid-mount design, this 'Quick On-Quick Off' Loader is ideal on the acreage, for landscaping and nursery work, and countless farm and livestock chores. With an impressive array of Quick On-Quick Off attachments LEON offers maximum value for your hard earned dollar.

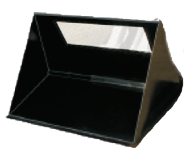
Fits Small 15 to 40 HP Case, Ford, New Holland, John Deere, Kubota, Mitsubishi, Yanmar tractors and more.

### ATTACHMENTS INCLUDE:

#### SNOW & MULCH BUCKETS



**CARRYALL LEVELLER**



**LOOSE MATERIAL HANDLER**



**ROTARY BROOM**

#### PALLET FORK LIFTS



## Your Newest Grading and Leveling Partner:

The LEON GZ Series Pull Scraper line is the ultimate partner for grading and leveling jobs year round. With a variety of blade widths, laser options, joystick control, additional weight box, and powerful 8 way hydraulics, LEON Dealers are helping farmers and contractors quickly re-shape and relandscape their land. Tackle the biggest jobs:

- Grading roads
- Pulling Ditches
- Leveling Front Bumps
- Landscaping
- Trenching and drainage work
- Leveling fence lines
- Corral Cleaning
- Snow removal
- Municipality and road construction
- Laser guided grading



**Financing Available on all LEON products through one of our hardworking partners:**

**WELLS FARGO**

**POLARIS LEASING**

**TCF INVENTORY FINANCE®**

## On The Road With LEON



TORONTO, ON



BRANDON, MB

LEON has displays at over 40 shows per year...



INDIANAPOLIS, IN



WOODSTOCK, ON

## Government Program Assistance Available

With fertilizer costs on the rise, farmers are being encouraged to do more vertical manure spreading. Provincial/State Stewardship Programs are offering a minimum 30% subsidy on components used for vertical spreading as a grant to encourage this initiative. This includes the cost of the vertical beater assembly, the cost for the hydraulic drive system to run the



vertical beaters and the cost of any required accessories. Recent studies continue to show the positive environmental effects of vertical spreading, especially in comparison to piling. The benefits are most apparent in canola fields and other major crops. Each Province/State is in a different phase of the program so please contact your Department Of Agriculture for specific details.



BOONE, IA

Across Canada, the USA, and the world...



HANOVER, GERMANY



LAS VEGAS, NV

Supporting our LEON Customers in anyway we can.



RED DEER, AB

## 'Bar C Ranch' Spreads the Good News

Vertical spreaders offer a variety of environmental and time-saving benefits. These benefits are recognized by agricultural scientists and farmers alike. The LEON 425V Silver Spreader offers these benefits plus a few extra features LEON is proud of. With its unique rear push off cylinder never again will you wonder if your box is empty! Need a trailer? The 'Quick On-Quick Off' beater assembly is as versatile as every LEON product, this feature allows you to use the trailer for stockpiling manure as well as spreading. **Dick Coombs of Bar C Ranch**, is impressed with his LEON M425V Silver Spreader. "You get a nice even, fine spread going straight onto the alfalfa fields without worrying about big clumps that you would have to harrow later!" One of his favourite things about the LEON Silver Spreader is that "the spread to the

side is as even as the spread right out the back which is remarkable." Like many farms, Coombs is a fan of getting work done quickly and efficiently. "The LEON M425V is relatively maintenance free. Once the sequence valve is set you just go." Making an investment is a decision that needs to be considered carefully but another great feature of the LEON Silver Spreader is its durability. "There is no vibration from the vertical beaters, so you know your bearings will last. Totally impressed!"



## Come See us at a Show

Western Canada Farm Progress Show  
June 20-22, 2012  
Regina, SK

Canada's Outdoor Farm Show  
September 11-13, 2012  
Woodstock, ON

Husker Harvest Show  
September 11-13, 2012  
Grand Island, Nebraska

GIE Expo  
October 24-26, 2012  
Louisville, Kentucky

AgriTrade  
November 7-10, 2012  
Red Deer, AB

Canadian Western Agribition  
November 19-24, 2012  
Regina, SK

Manitoba Ag Days  
January 15-17, 2013  
Brandon, MB

Ag Connect  
January 29-31, 2013  
Kansas City, Kansas

### LEON Updates!

Search for LeonsMFG and find us on all your favourite social networking sites!



### CONTACT US:

135 York Road E  
Yorkton, SK  
S3N 3Z4

1-800-667-1581  
or  
306-786-2600

[www.leonsmfg.com](http://www.leonsmfg.com)